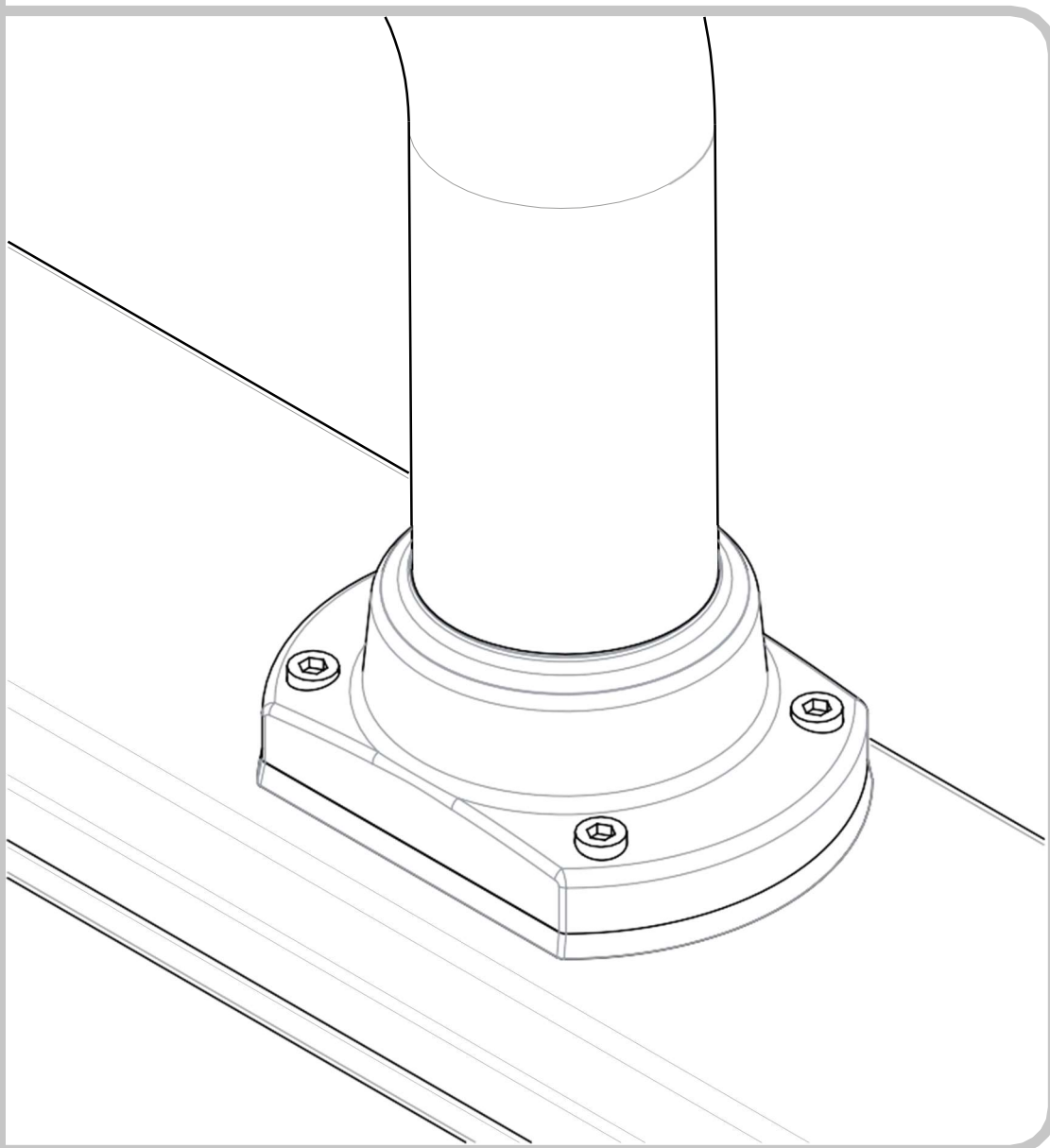


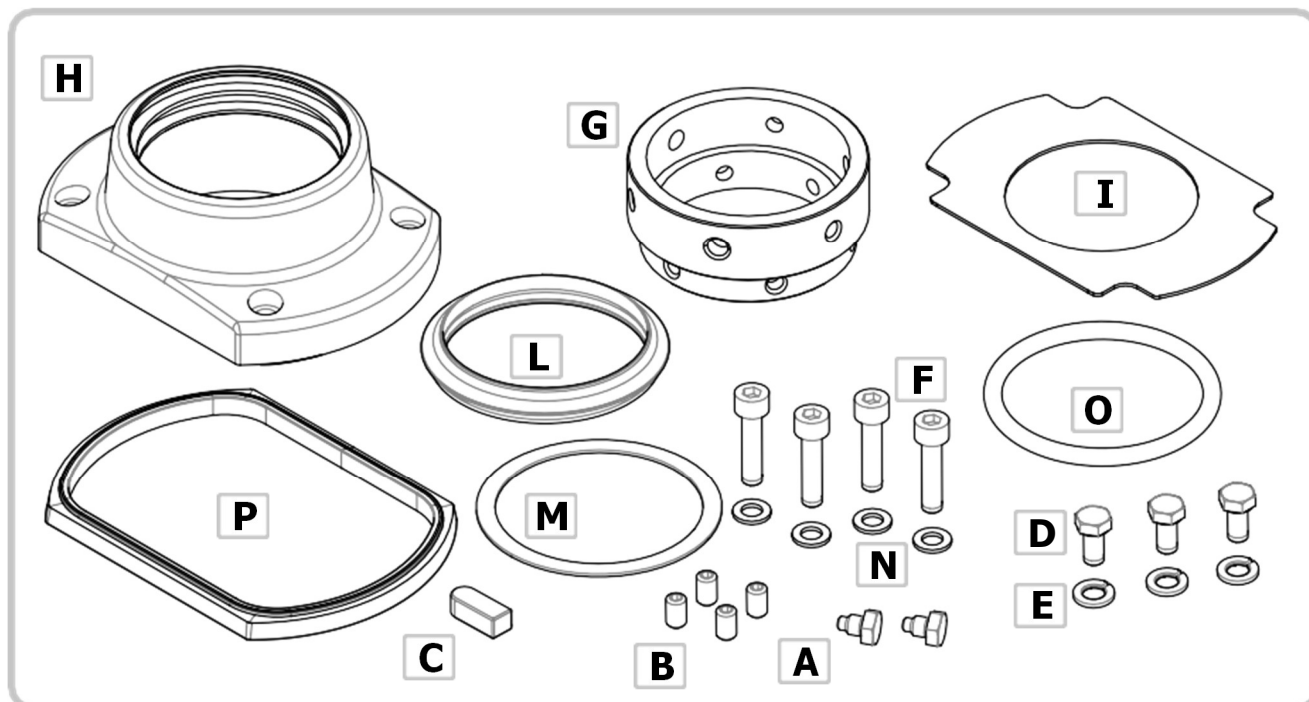


ilinox



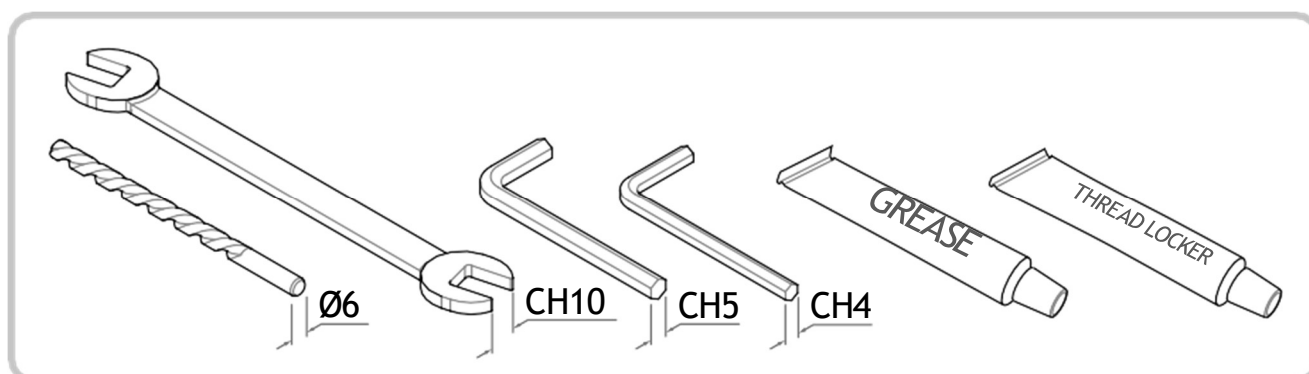
GKSEB ISTRUZIONI DI MONTAGGIO ASSEMBLY INSTRUCTIONS

REV.01 - 15/05/2024



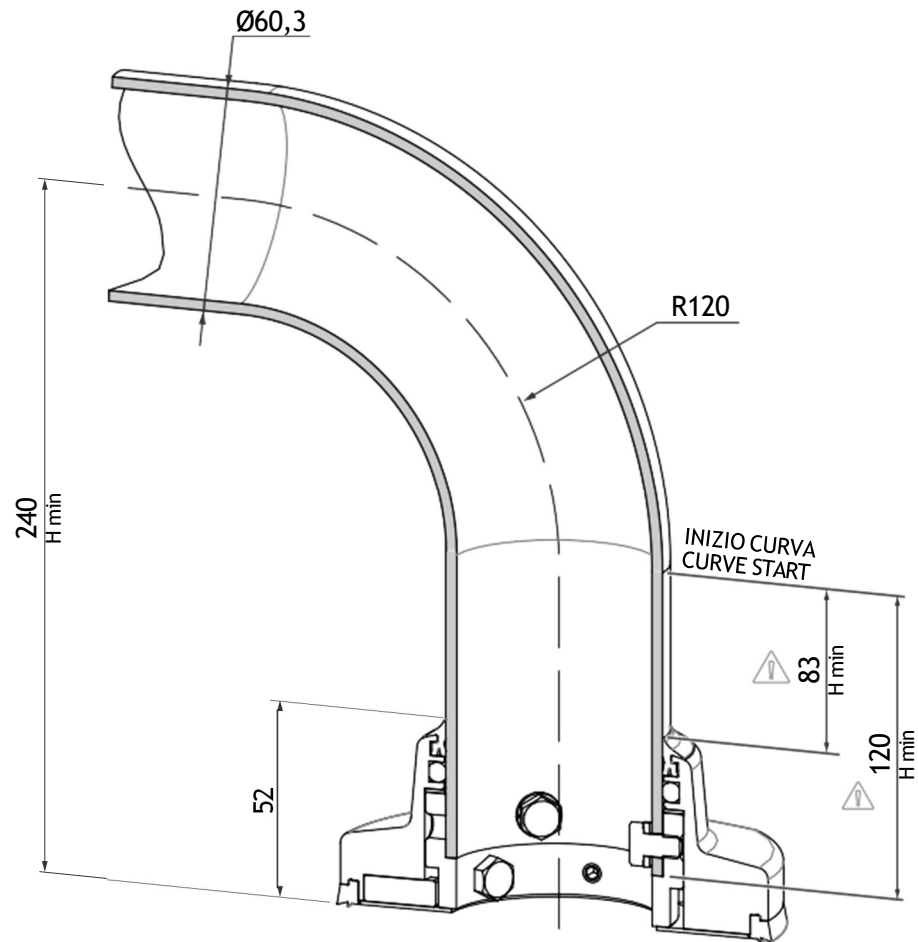
KIT DI MONTAGGIO ASSEMBLY KIT

Q.TÀ QUANTITY	CODICE ILINOX ILINOX CODE	NORMATIVA RULES
2	VB-GKSA - ("A")	ISO 7380 SHAPE A M6x8 A2
4	VGSTEI0610I - ("B")	ISO 4026 M6x10 A2
1	CHP080720 - ("C")	EX ISO 773 C 8x7 L.20
3	VTE0610I - ("D")	ISO 7380 SHAPE A M6x10 A4
3	RS0611I - ("E")	DIN 127 B UNI 1751 B M6 D=11 A2
4	VTCEI0625I - ("F")	ISO 4762 M6x25 A2
4	GR-GKSEB - ("N")	
1	OR6237 - ("O")	

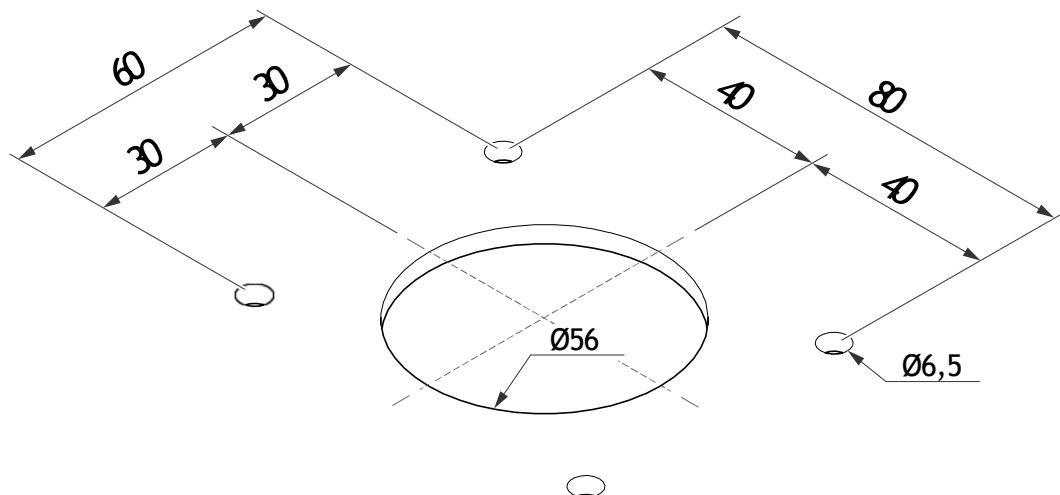


STRUMENTI TOOLS

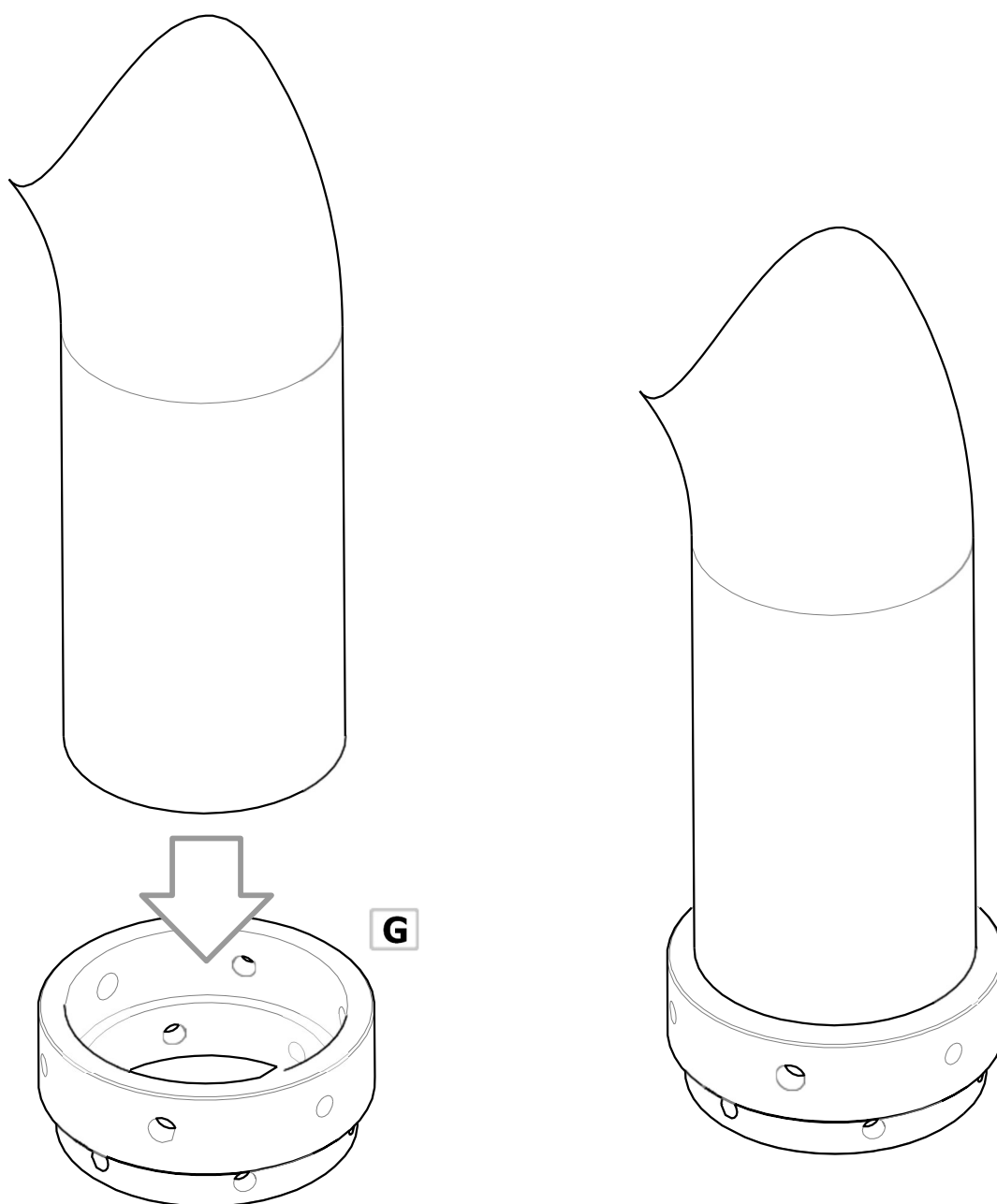
TAGLIO DEL TUBO
TUBE CUTTING

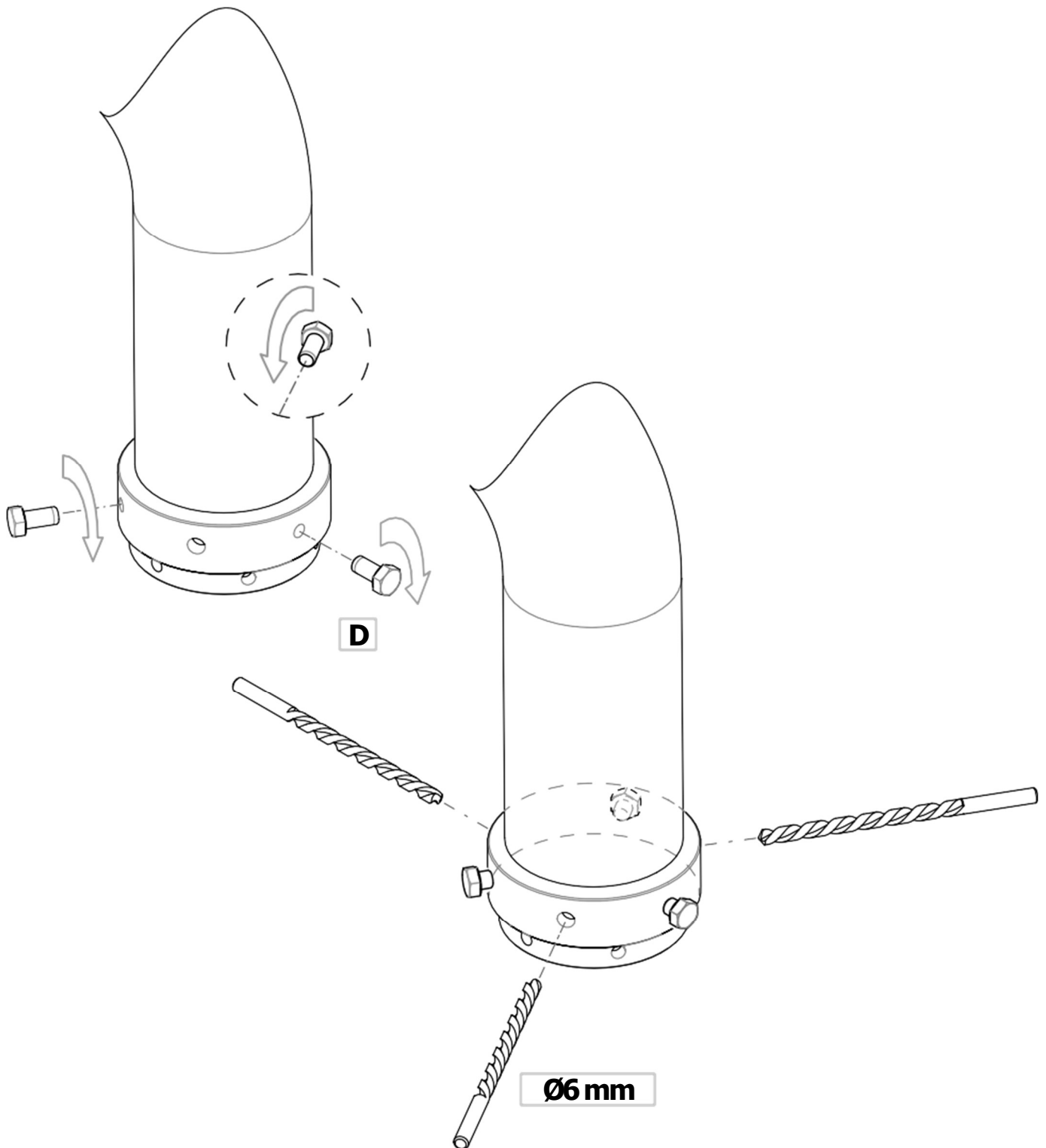


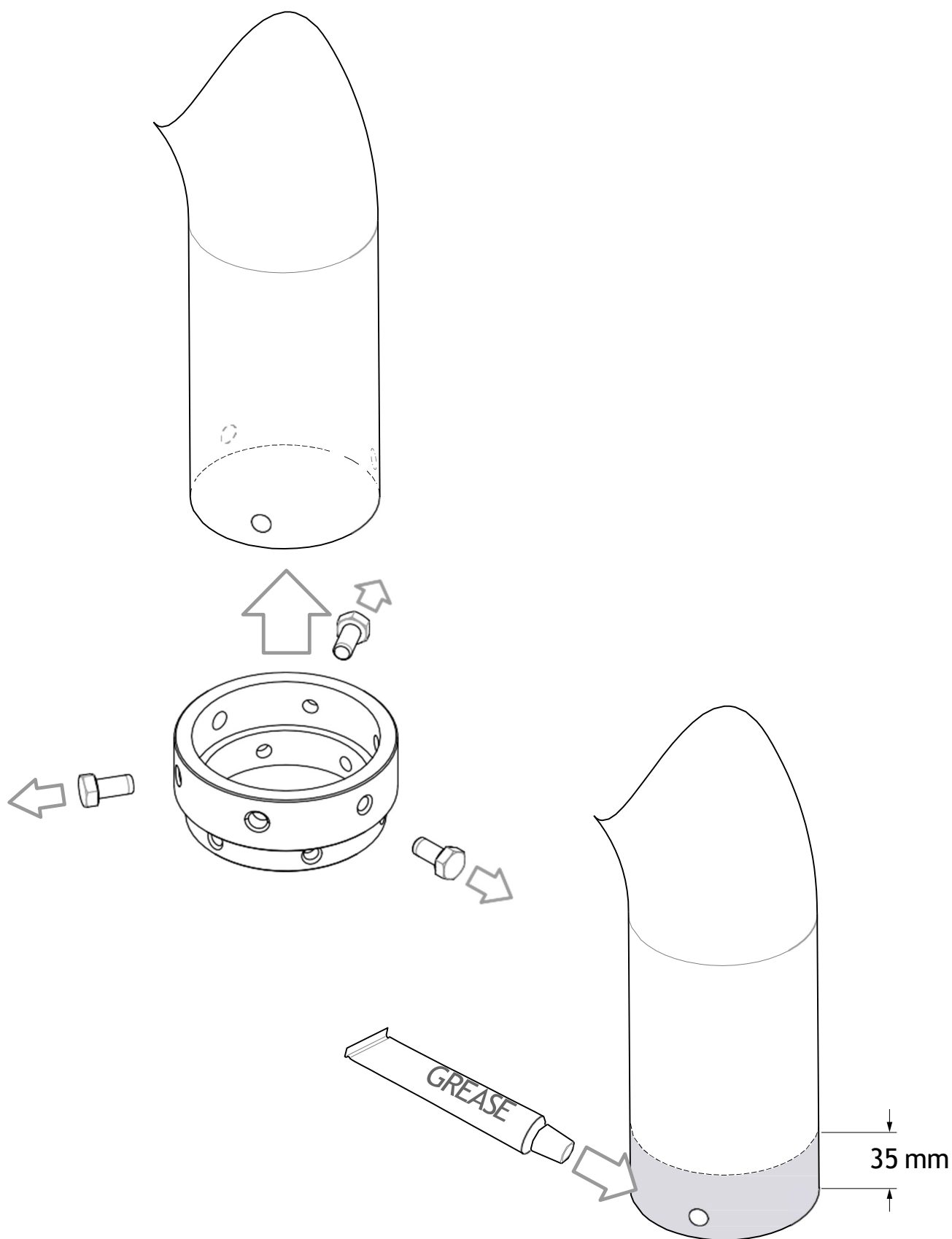
DIMA DI FORATURA
DRILLING FORM

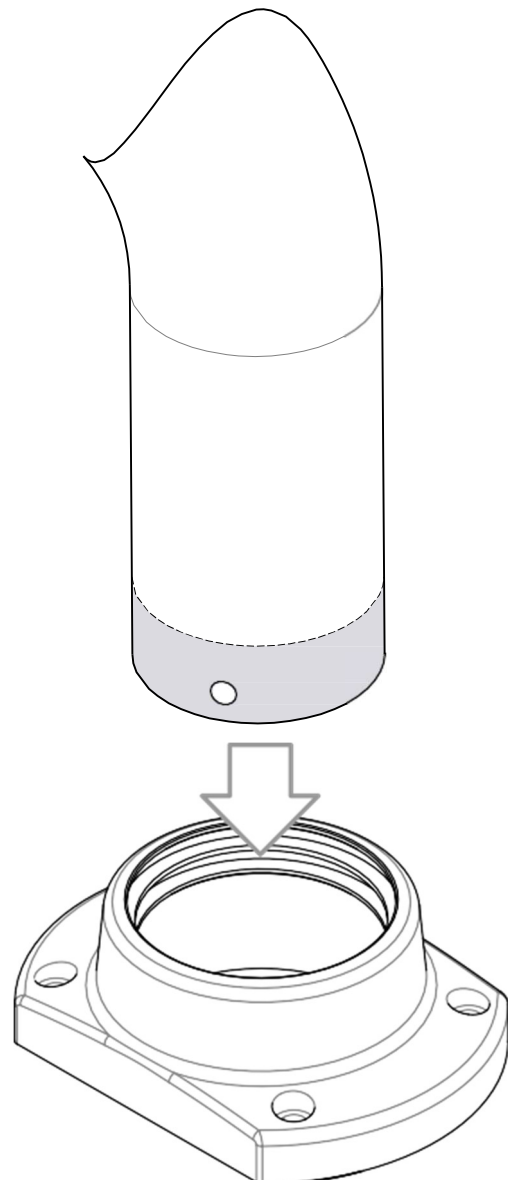
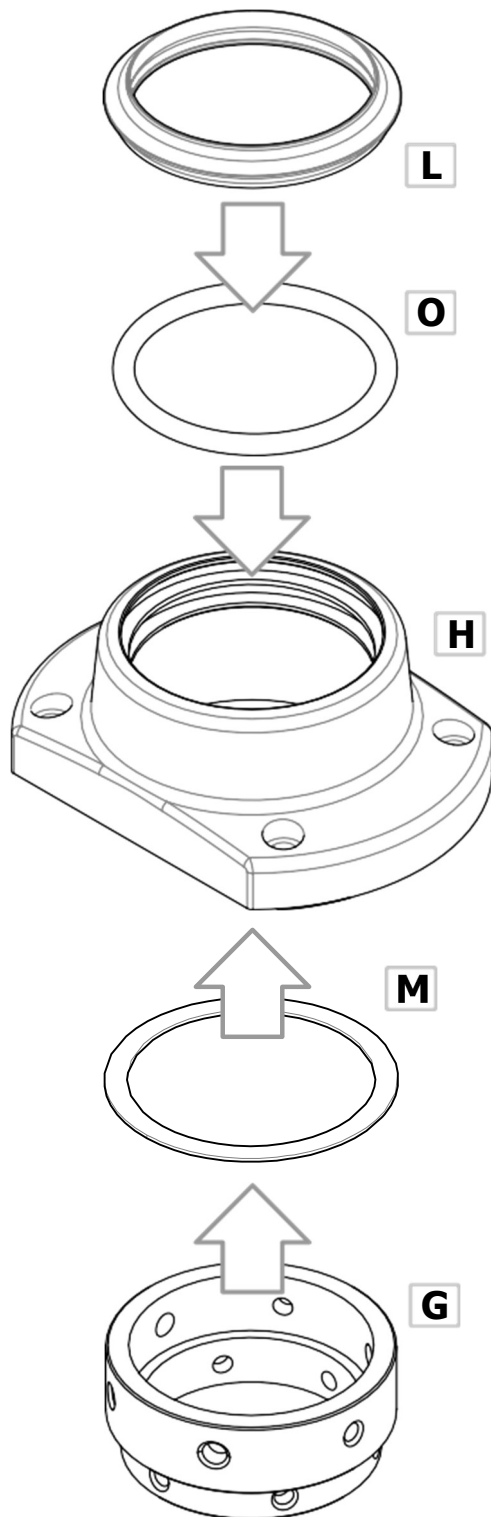


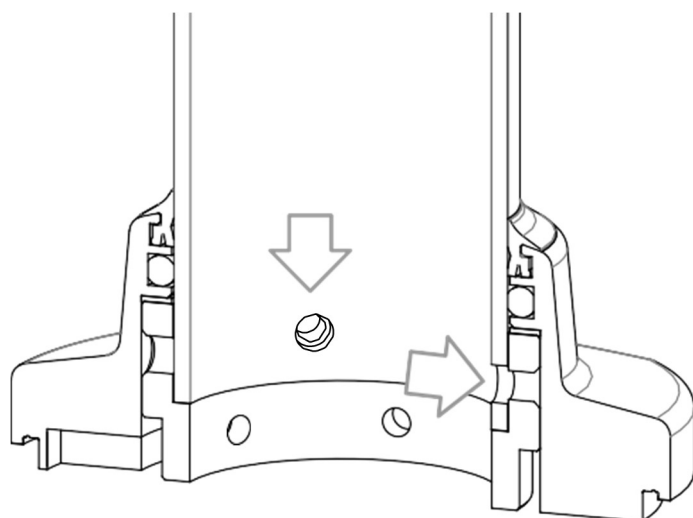
MONTAGGIO
ASSEMBLY



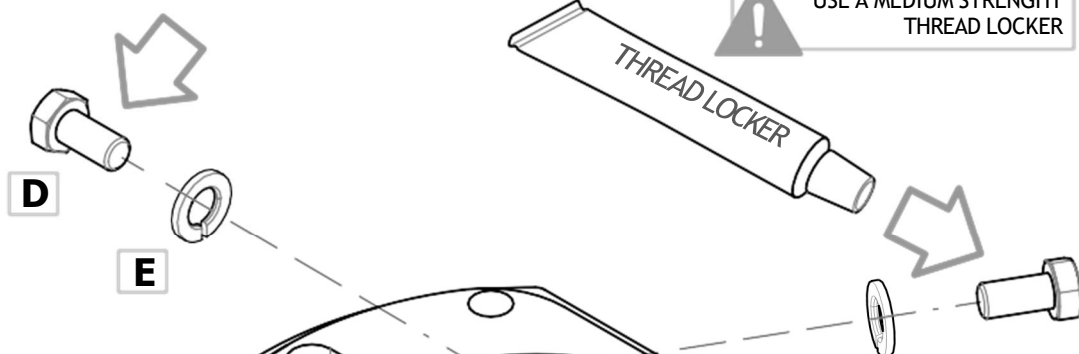




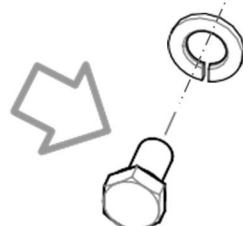




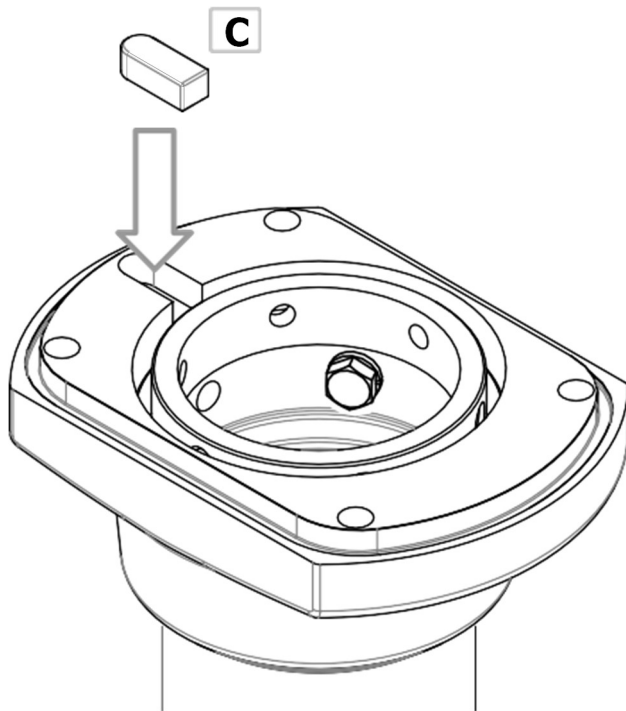
UTILIZZARE UN FRENAFILLETTI
A MEDIA TENUTA
USE A MEDIUM STRENGTH
THREAD LOCKER



COPPIA DI SERRAGGIO
TIGHTENING TORQUE
10,5 Nm

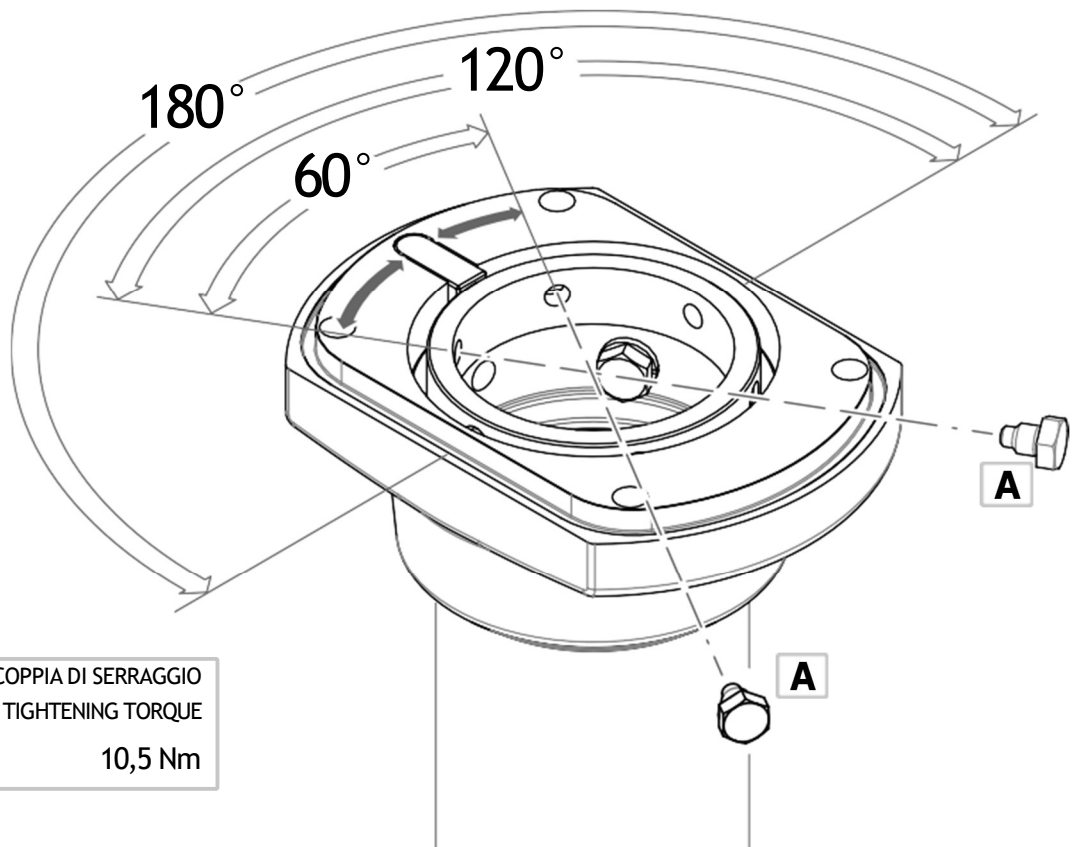


CON ROTAZIONE
WITH ROTATION



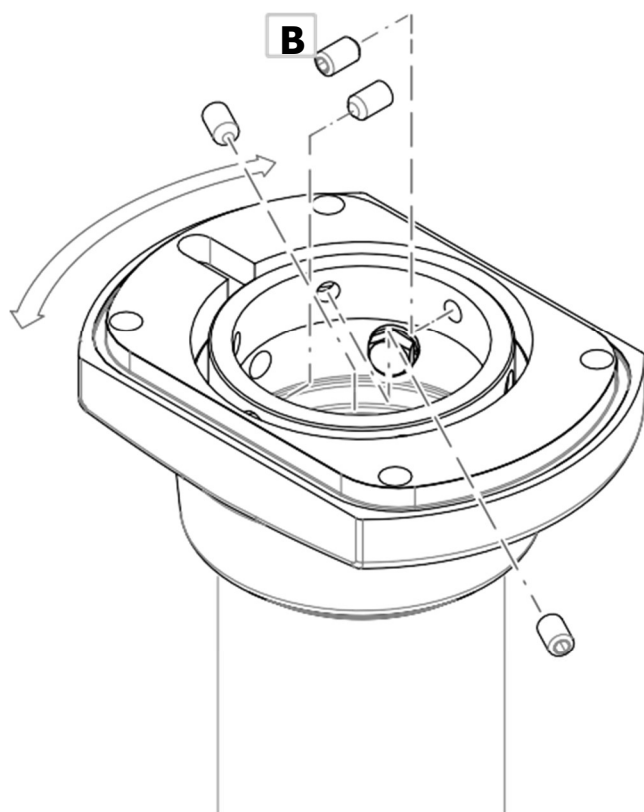
**ANGOLI DI ROTAZIONE
ROTATION ANGLES**

60°
120°
180°
240°
300°

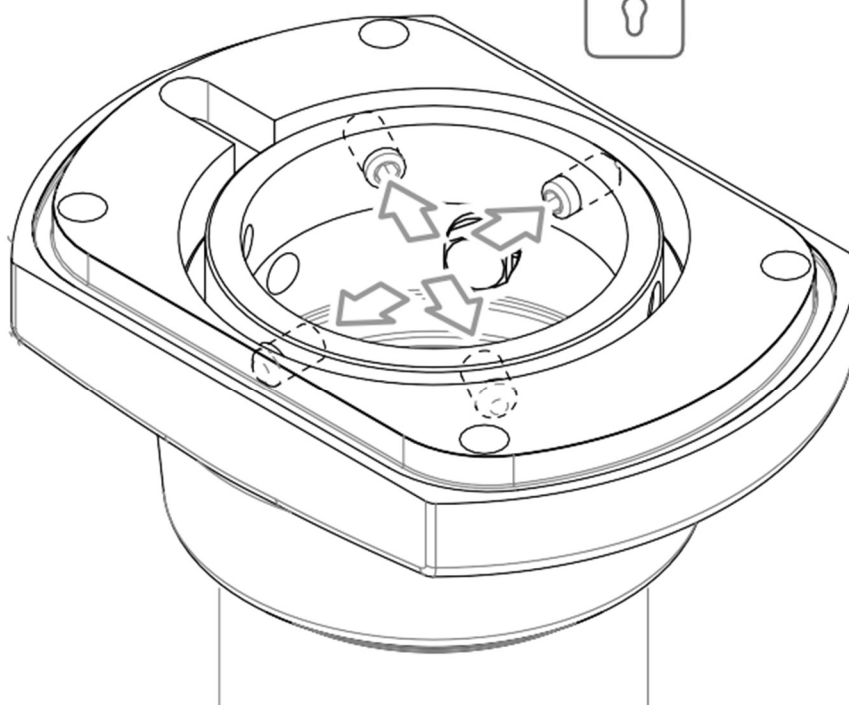


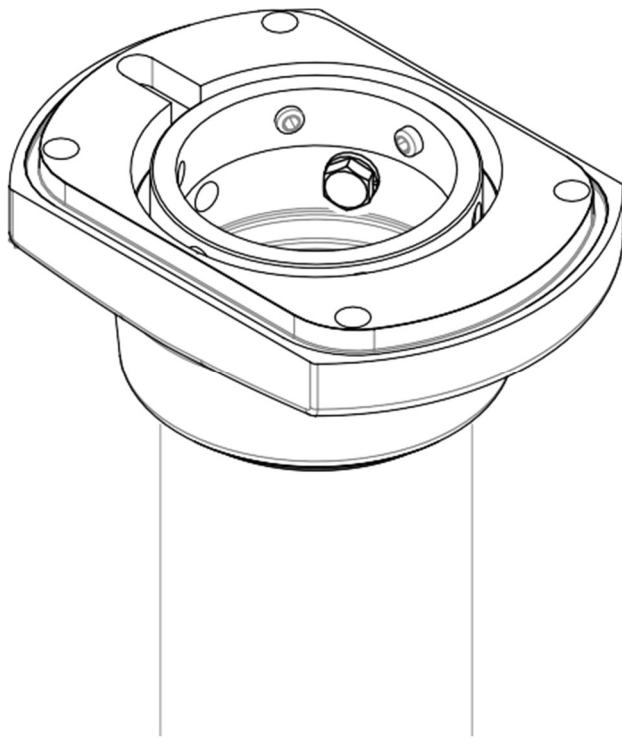
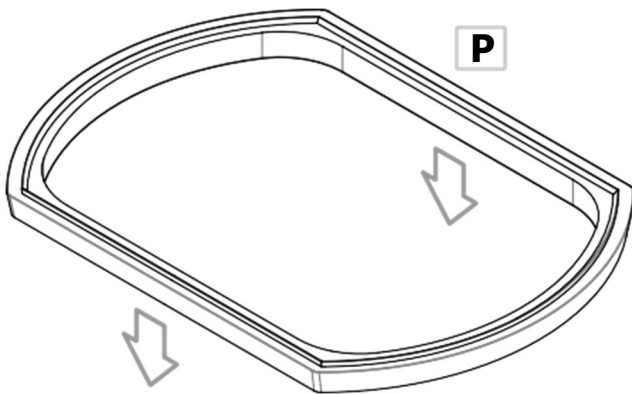
COPPIA DI SERRAGGIO
TIGHTENING TORQUE
10,5 Nm

SENZA ROTAZIONE
WITHOUT ROTATION



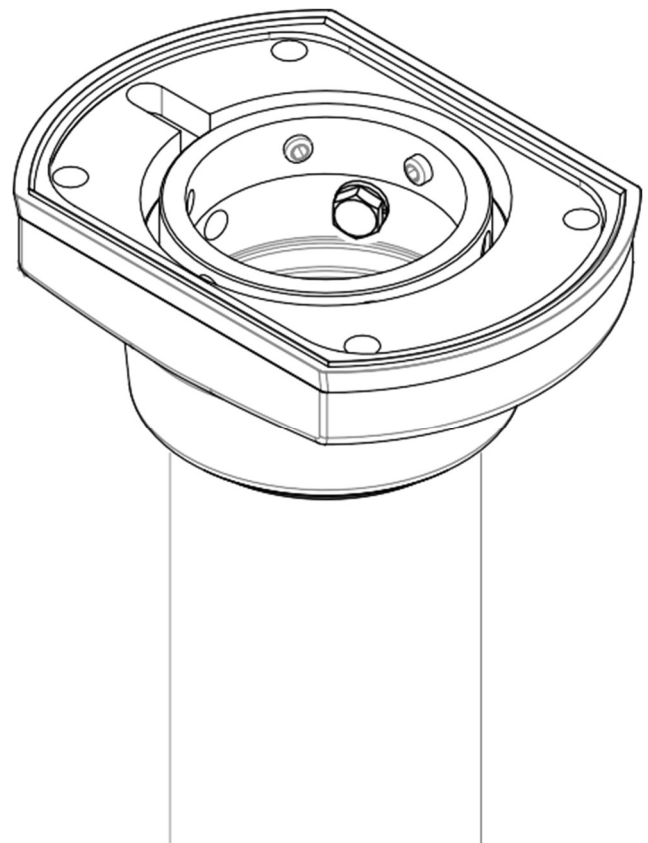
! COPPIA DI SERRAGGIO
TIGHTENING TORQUE
10,5 Nm





NB: INSERIRE LA GUARNIZIONE
FACENDOLA INCASTRARE
PERFETTAMENTE NELLA SUA
SEDE

MAKE SURE THAT THE GASKET
IS PERFECTLY FITTED IN
ITS SEAT



MONTAGGIO FINALE
FINAL ASSEMBLY

